

# JHS

Joseph Hamilton Seaton

## Triumph Everyway

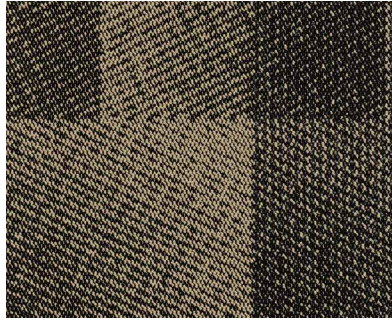
A remarkable addition to the best-selling Triumph family, designed to redefine aesthetics across many market sectors including Education and Workplace. Versatile and innovative, these carpet tiles break free from traditional design constraints, allowing for installation in any orientation. Constructed for the challenges of busy environments, Triumph Everyway ensures longevity whilst offering the opportunity to create stylish and versatile spaces. Elevate your surroundings with Triumph Everyway, where adaptability meets durability, inspiring productivity and sophistication in every corner.





**Air Force**

LRV Rating: 5.6



**Cobble**

LRV Rating: 9.6



**Denim**

LRV Rating: 9.3



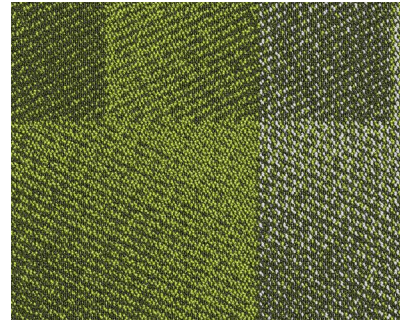
**Granite**

LRV Rating: 8.7



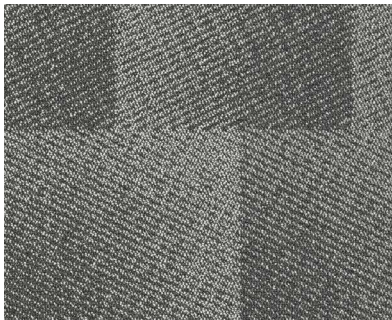
**Marine**

LRV Rating: 6.3



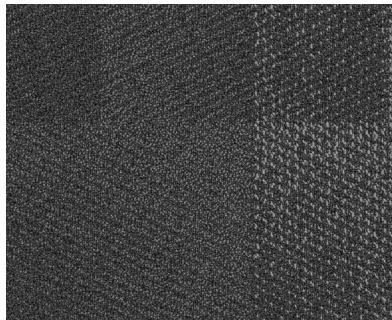
**Moss**

LRV Rating: 9.0



**Soft Smoke**

LRV Rating: 15.6



**Steel**

LRV Rating: 12.9

## Triumph Everyway

<b>Construction</b>	1/12" Cut Pile	
<b>Pile Content</b>	100% Solution Dyed Nylon	
<b>Secondary Backing</b>	Polymer modified Bitumen backing, 75% recycled content, non woven fleece	
<b>Pile Height</b>	2.5mm	
<b>Pile Weight</b>	650g/m <sup>2</sup>	
<b>Total Height</b>	5.1mm	
<b>Total Weight</b>	3800g/m <sup>2</sup>	
<b>Size</b>	50cm x 50cm	
<b>Wear Classification</b>	EN 1307	33
<b>Stitch Count</b>	226,000m <sup>2</sup>	
<b>Luxury Classification</b>	EN 1307	LC3
<b>Fire Classification</b>	ISO 13501-1	Cfl-s1

