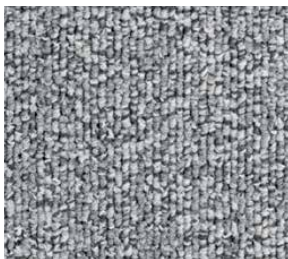


# Colour Foundation Collection

## Carpet Tile



**930 Mist**

LRV 24.56



**980 Fog**

LRV 14.30



**970 Dust**

LRV 11.97



**990 Smoke**

LRV 7.23



**995 Scoria**

LRV 4.40



**999 Charcoal**

LRV 3.40



**630 Hay**

LRV 23.91



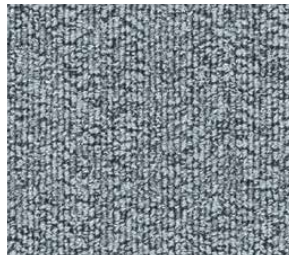
**635 Straw**

LRV 23.10



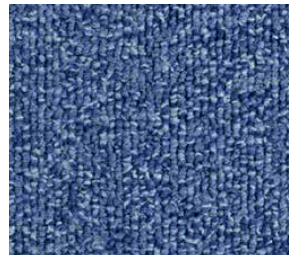
**670 Silt**

LRV 11.13



**120 Steam**

LRV 17.0



**170 Sky**

LRV 9.73



**190 Marine**

LRV 4.0



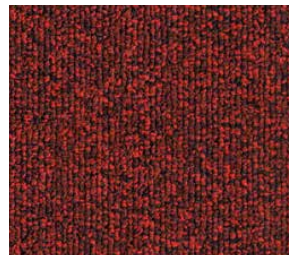
**230 Jade**

LRV 18.0



**250 Beryl**

LRV 10.1



**590 Lava**

LRV 3.87

# Colour Foundation Collection

<b>Construction</b>		Tufted Loop Pile
<b>Pile Content</b>		100% Econyl Solution Dyed Nylon
<b>Primary Backing</b>		Fibreglass
<b>Secondary Backing</b>		Bitumen
<b>Pile Weight</b>		480g/m <sup>2</sup>
<b>Total Weight</b>		4040g/m <sup>2</sup>
<b>Pile Height</b>		2.4mm
<b>Total Thickness</b>		5.7mm
<b>Gauge</b>		1/10"
<b>Stitch Count</b>		193,550m <sup>2</sup>
<b>Tile Size</b>		50x50cm
<b>Wear Classification</b>	<b>EN1307</b>	33
<b>Luxury Classification</b>	<b>EN1307</b>	LC1
<b>Castor Chair</b>		No damage
<b>Fastness to Light</b>		≤7/8
<b>Antistatic</b>		≤2kV
<b>Fire Classification</b>	<b>ISO 13501-1</b>	Bfl-s1
<b>Sound Absorption</b>		α <sub>w</sub> 0.15
<b>Impact Noise Rating</b>	<b>ISO 10140</b>	24dB
<b>Thermal Conductivity</b>		0,15 m <sup>2</sup> C°/W



Monolithic



Quarter Turn

**ECONYL®**

**JOSEPH HAMILTON SEATON**  
Relay Park, Relay Drive, Tamworth, Staffordshire. B77 5PR

Tel: 01827 831 400 | Email: [sales@jhscarpets.com](mailto:sales@jhscarpets.com) | [www.jhscarpets.co.uk](http://www.jhscarpets.co.uk)