

# Waterlow Park

## Wool Loop



Mirror Quartz



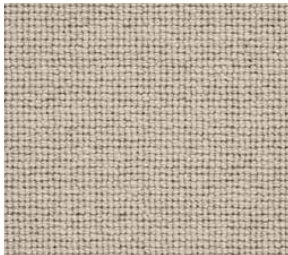
Cloud Pearl



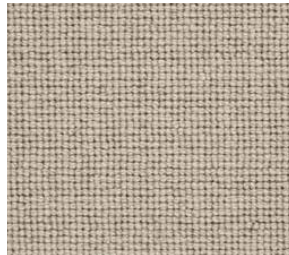
Glow



Silk Fawn



Capital Granite



Burlap



Braid Sisal



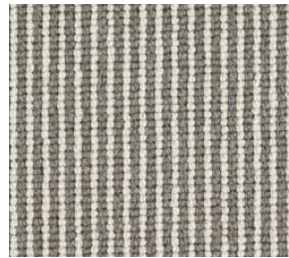
Prairie



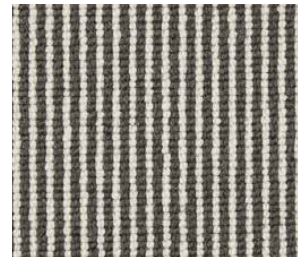
Drifted Birch



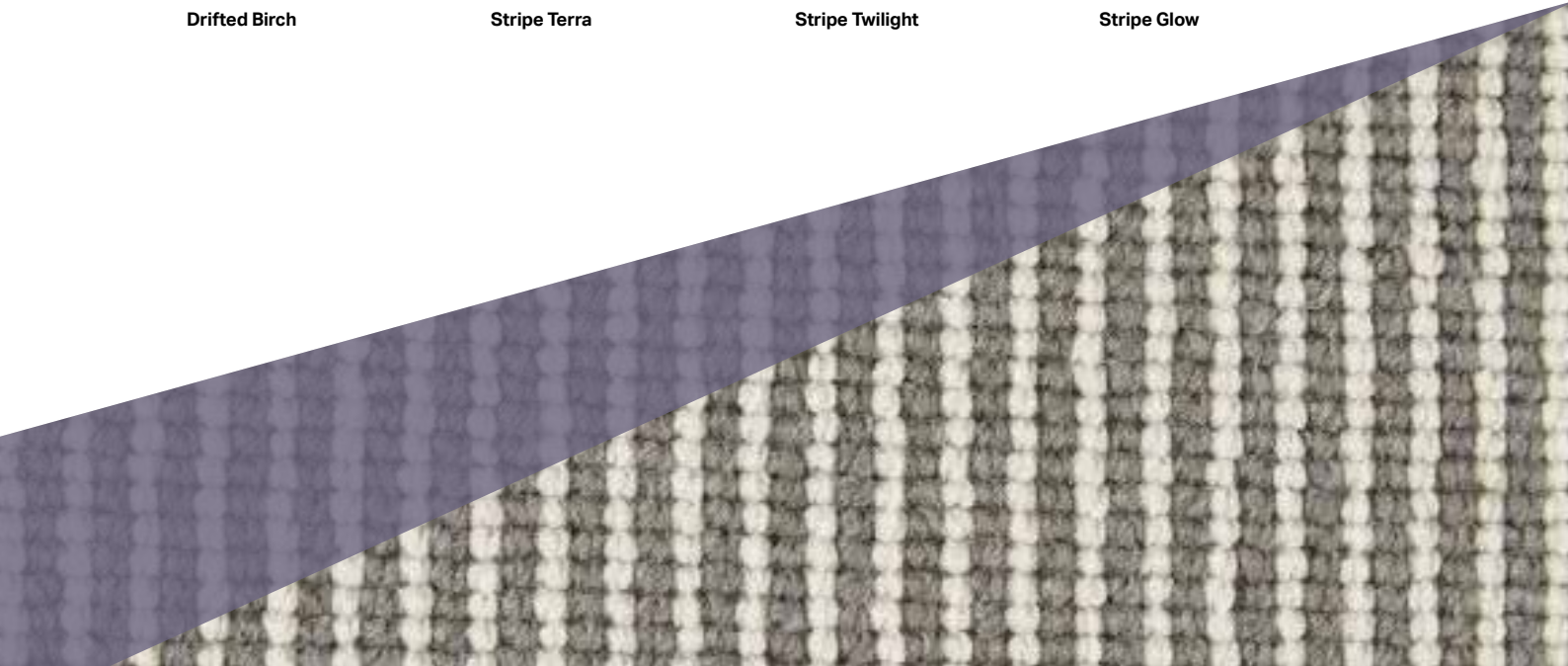
Stripe Terra



Stripe Twilight



Stripe Glow



## Waterlow Park

|                     |                                  |                   |
|---------------------|----------------------------------|-------------------|
| Construction        | Wool Loop                        |                   |
| Pile Content        | 50% Wool, 50% Polypropylene      |                   |
| Secondary Backing   | Fleece Back                      |                   |
| Machine Gauge       | 5/32"                            |                   |
| Size                | 4m & 5m Widths - Stripes 4m only |                   |
| Pile Height         | 5mm                              |                   |
| Total Height        | 8mm                              |                   |
| Pile Weight         | 1080g/m <sup>2</sup>             |                   |
| Total Weight        | 2100g/m <sup>2</sup>             |                   |
| Tog Rating          | 1.09                             |                   |
| Wear Classification | EN 1307                          | 23 Heavy Domestic |

