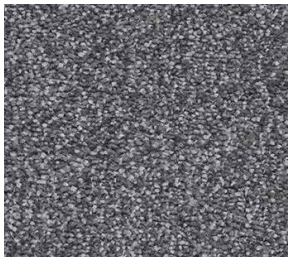
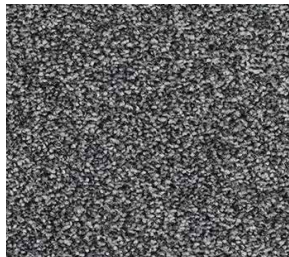


Kensington

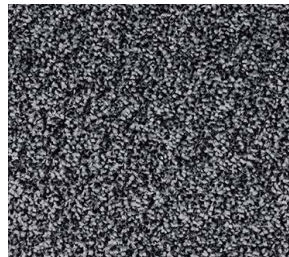
Twist Pile



Kensington Fog



Garden Slate



Embassy Ash



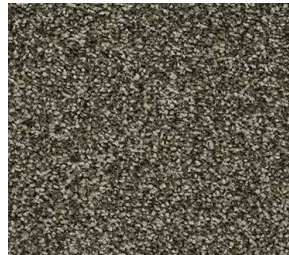
Chelsea Night



Cadogan Clay



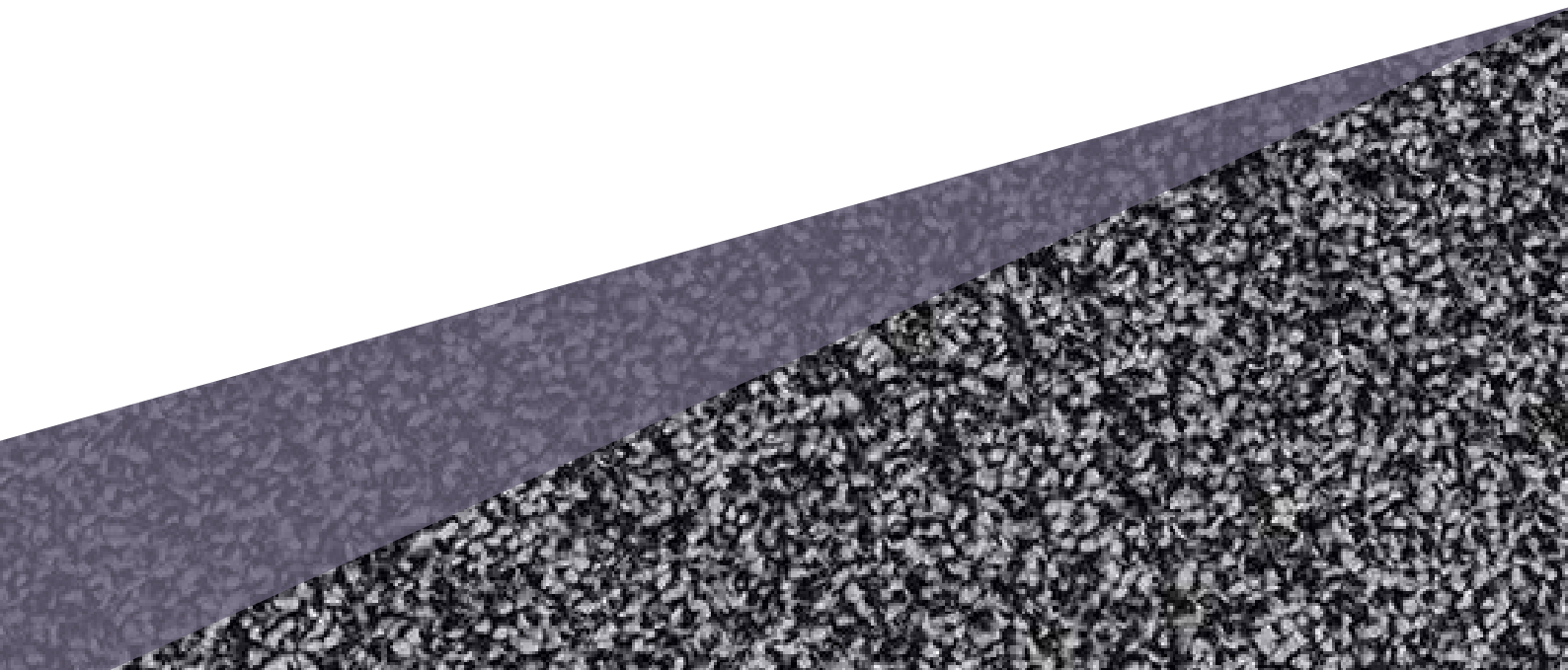
Hyde Pewter



Royal Taupe



Albert Azure



Kensington

Construction	Twist Pile	
Pile Content	100% Polypropylene	
Secondary Backing	Action Back	
Machine Gauge	1/10"	
Pile Weight	1780g/m ²	
Total Weight	2680g/m ²	
Pile Height	11.5mm	
Total Height	13.5mm	
Tog Rating	1.33	
Size	4m & 5m Widths	
Suitability	EN 1307	23 Heavy Domestic

