

Brimmington Park

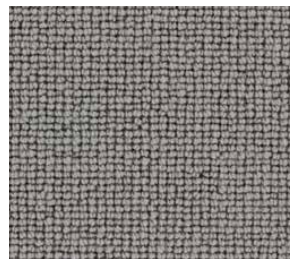
Loop Pile



Warm



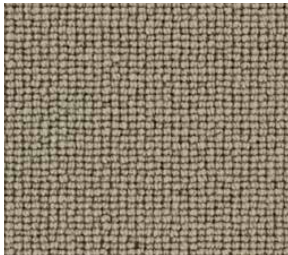
Mouse



Pewter



Clay



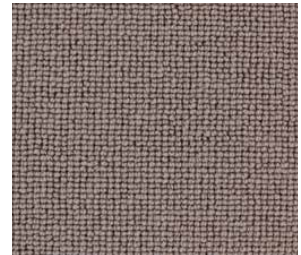
Taupe



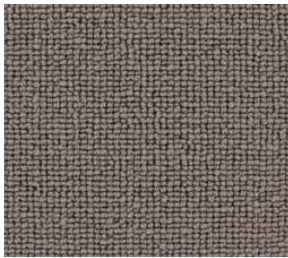
Camel



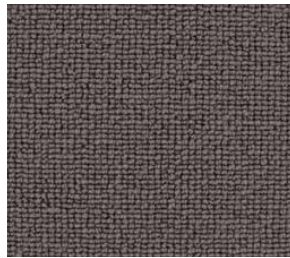
Peanut



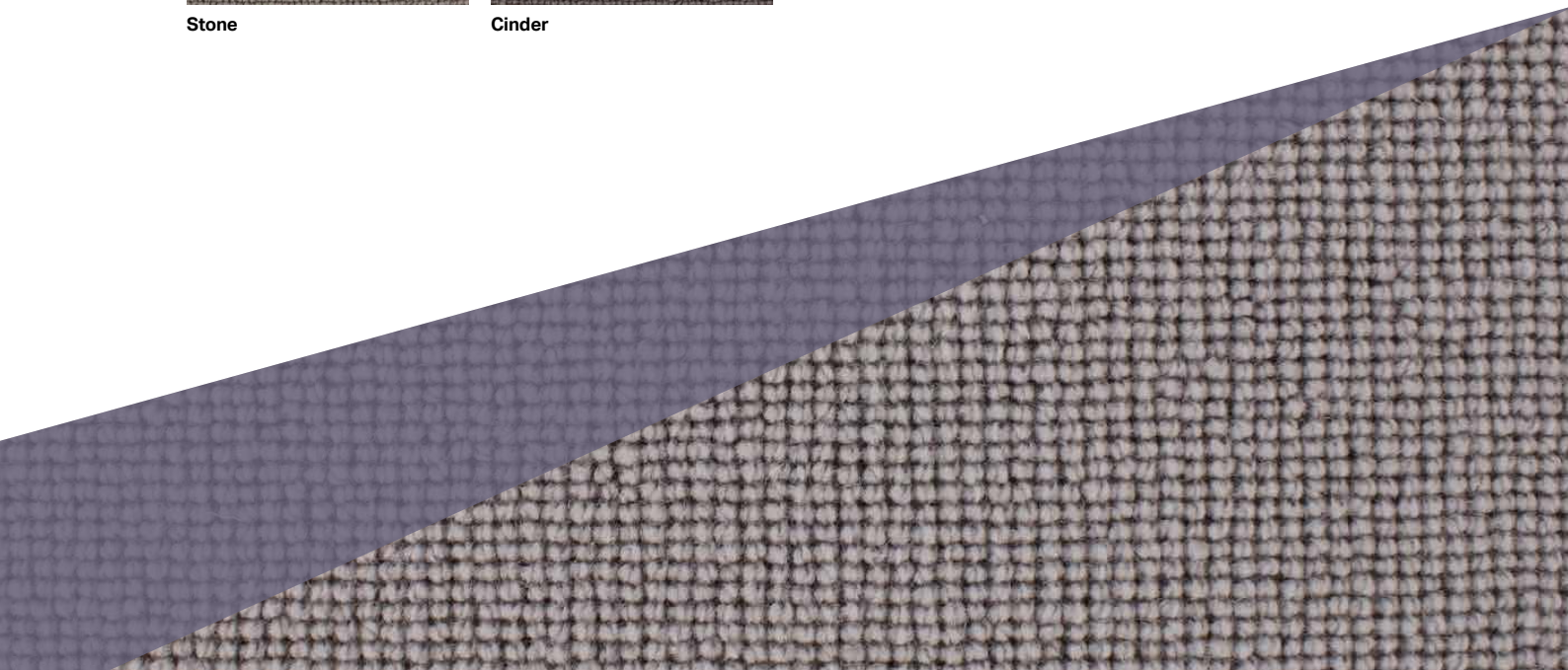
Maroon



Stone



Cinder



Brimmington Park

Construction	Loop Pile	
Pile Content	100% New Zealand Wool	
Secondary Backing	Action Back	
Machine Gauge	5/32"	
Pile Weight	1030g/m ²	
Total Weight	2100g/m ²	
Pile Height	4.5mm	
Total Height	7.5mm	
Tog Rating	0.9	
Size	4m & 5m Widths	
Suitability	EN 1307	23 Heavy Domestic / 32 General contract

