

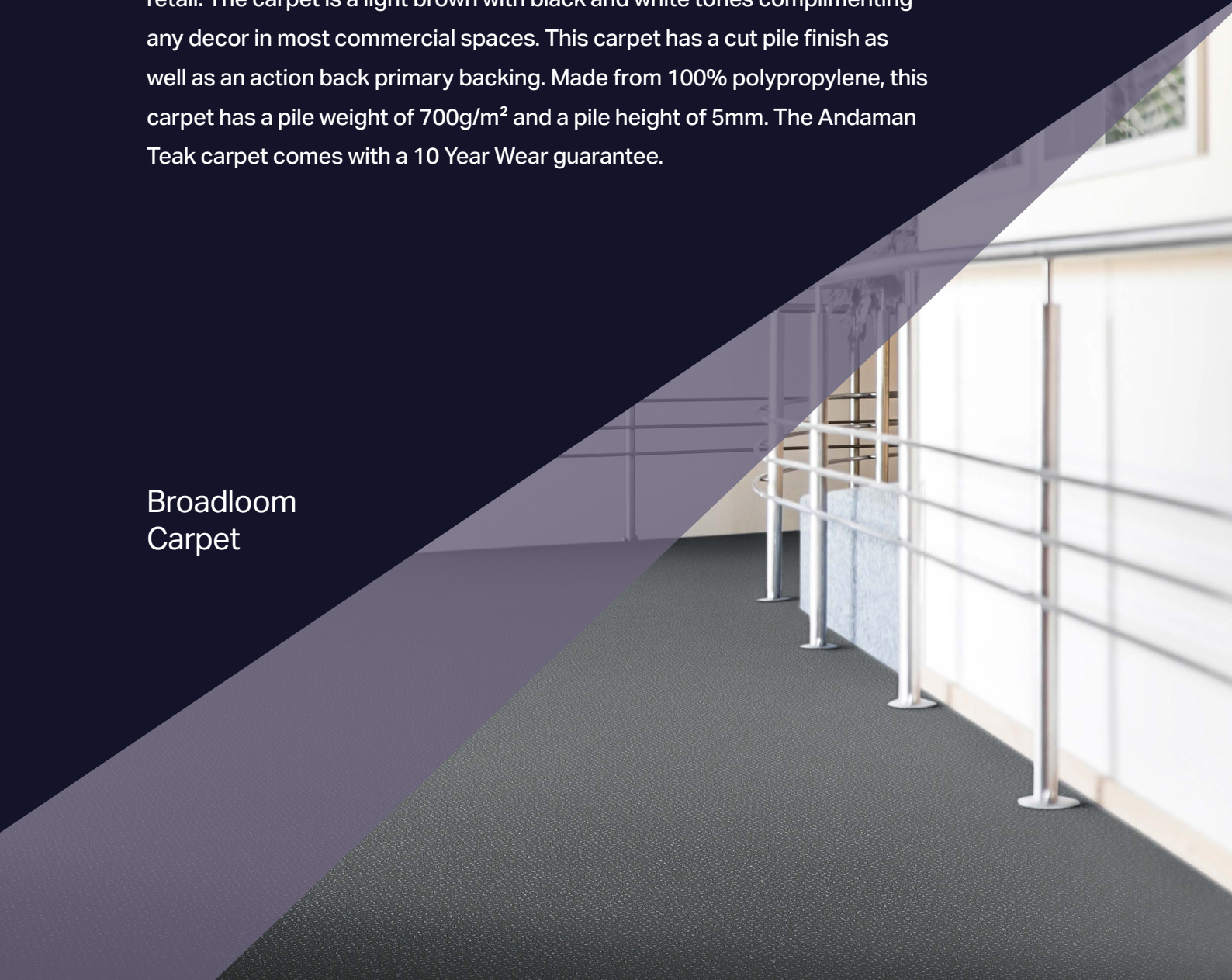
# JHS

Joseph Hamilton Seaton

## New Andaman

The Andaman carpet is perfect for commercial use in the public and private sectors and is particularly well suited to offices, commercial buildings and retail. The carpet is a light brown with black and white tones complimenting any decor in most commercial spaces. This carpet has a cut pile finish as well as an action back primary backing. Made from 100% polypropylene, this carpet has a pile weight of 700g/m<sup>2</sup> and a pile height of 5mm. The Andaman Teak carpet comes with a 10 Year Wear guarantee.

Broadloom  
Carpet

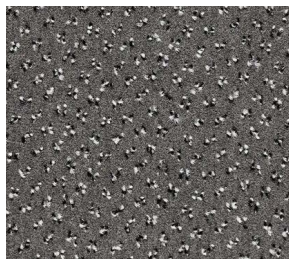


# New Andaman

Broadloom & Impervious Carpet



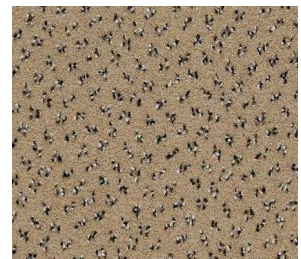
158 Anthracite



140 Ash



141 Black



330 Beige



962 Teak



887 Oriental Blue



890 Marine



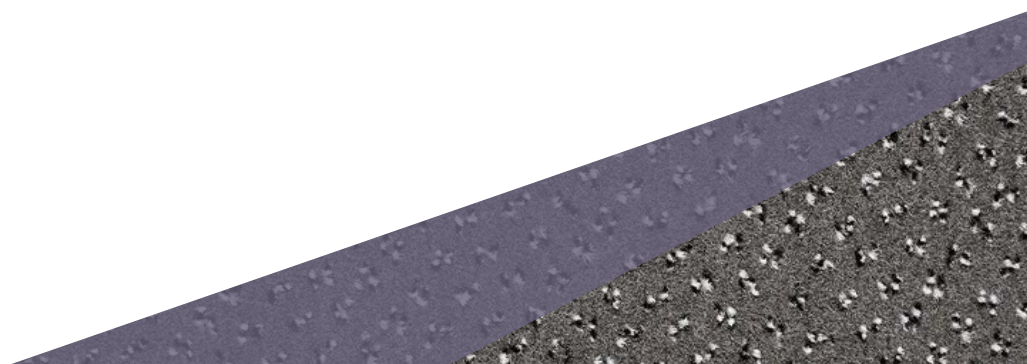
224 Jade



455 Rustic Red



446 Port



# New Andaman

		Action Back	Impervious Gel
Construction		Tufted Cut Pile	Tufted Cut Pile
Pile Content		100% Polypropylene	100% Polypropylene
Primary Backing		Non-Woven	Non-Woven
Secondary Backing		Action Back	Impervious Gel
Pile Weight		700g/m <sup>2</sup>	700g/m <sup>2</sup>
Total Weight		1,610g/m <sup>2</sup>	1,900g/m <sup>2</sup>
Pile Height		5mm	5mm
Total Height		7mm	7mm
Gauge		1/10"	1/10"
Stitch Count		197,000m <sup>2</sup>	197,000m <sup>2</sup>
Size		Width 4m	Width 4m
Wear Classification	EN1307	33	33
Luxury Classification	EN1307	LC2	LC2
Fastness to Light	ISO 105-B02	≥5	≥5
Antistatic	ISO 6356	≤2kV	≤2kV
Fire Classification	EN 13501-1	Dfl-s1	Dfl-s1

