

Hospi Excel

Impervious Carpet



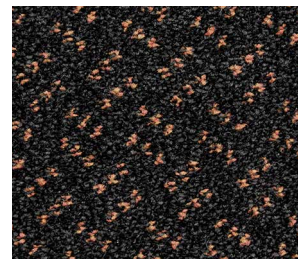
830 Cast Iron



870 Gravel



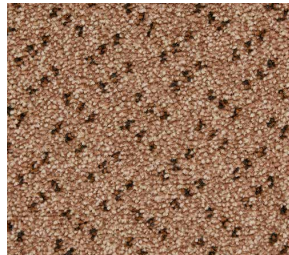
820 Shadow



810 Midnight



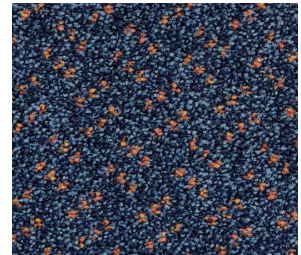
860 Camel



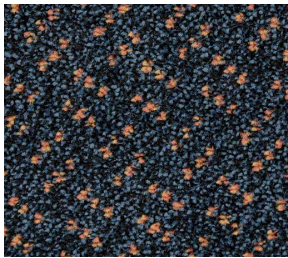
230 Beige



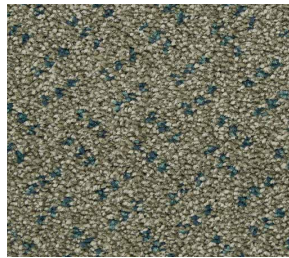
420 Taupe



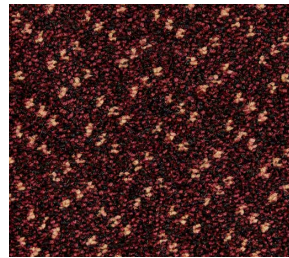
770 Azure



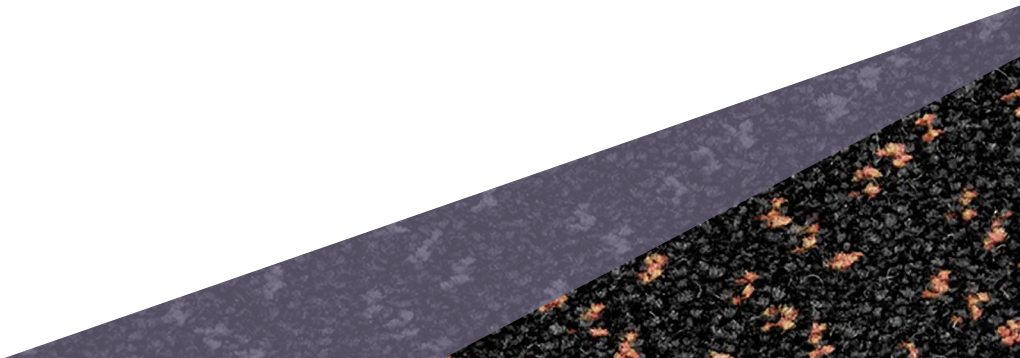
790 Navy



480 Green



100 Red



Hospix Excel

| | | |
|------------------------------|--------------------|----------------------------------|
| Construction | | Tufted Cut Pile |
| Pile Content | | 100% Solution Dyed Polypropylene |
| Primary Backing | | Woven |
| Secondary Backing | | Impervious Gel |
| Pile Weight | | 1,160g/m ² |
| Total Weight | | 2,810g/m ² |
| Pile Height | | 5mm |
| Total Height | | 8mm |
| Gauge | | 1/10 |
| Stitch Count | | 189,120m ² |
| Size | | Width 4m |
| Wear Classification | EN1307 | 23 |
| Luxury Classification | EN1307 | LC3 |
| Fastness to Light | | >6 |
| Antistatic | | <2Kv |
| Fire Classification | ISO 13501-1 | Efl |
| Impact Noise Rating | | 30dB |
| Thermal Conductivity | | 0.076 |
| Tog Rating | | 0.76 |
| Anti-Microbial | | No |

