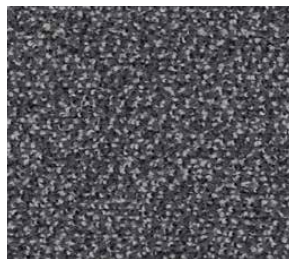


Belmont

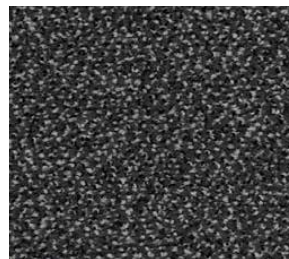
Broadloom Carpet



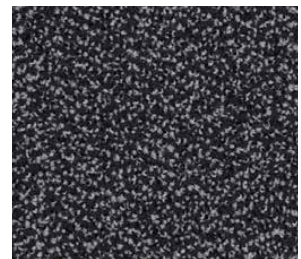
413 Sandstone



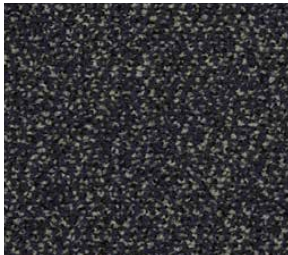
421 Silver



426 Steel



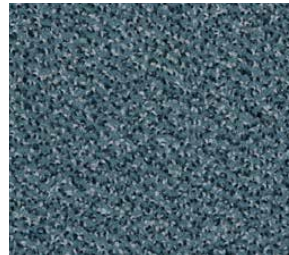
428 Cast Iron



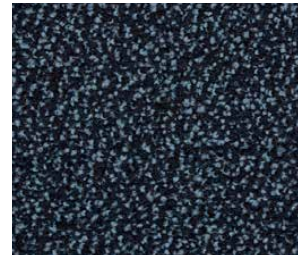
439 Nightshade



416 Latte



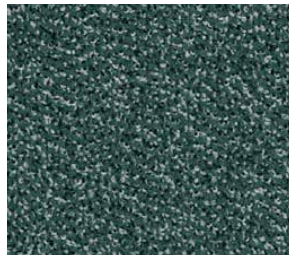
433 Sky



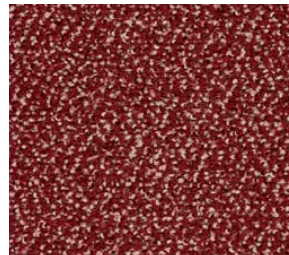
436 Azure



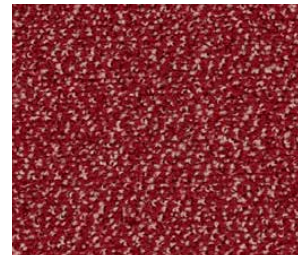
418 Mocha



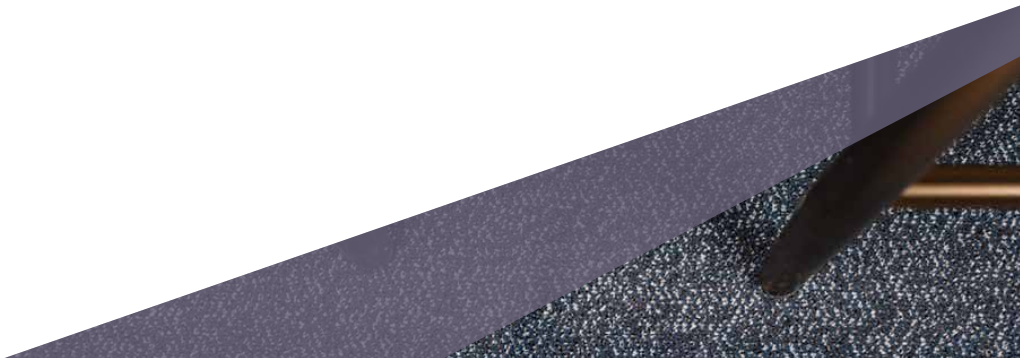
445 Forest



455 Scarlet



451 Pillarbox



Belmont

Construction		Tufted Cut Pile
Pile Content		100% Nylon 6.6
Primary Backing		Woven
Secondary Backing		Action Back
Pile Weight		650g/m ²
Total Weight		1,750g/m ²
Pile Height		4mm
Total Height		6mm
Gauge		1/10"
Stitch Count		141,750m ²
Size		Width 4m
Wear Classification	EN1307	33
Luxury Classification	EN1307	LC2
Fastness to Light	ISO 105-B02	≥5
Antistatic	ISO 6356	≤2kV
Fire Classification	ISO 13501-1	Bfl-s1
Thermal Conductivity	ISO 8302	0.13m ² k/w

