

# Sprint - Plain

## Carpet Tile



75 Cloud



272 Dove



76 Shadow



77 Porpoise



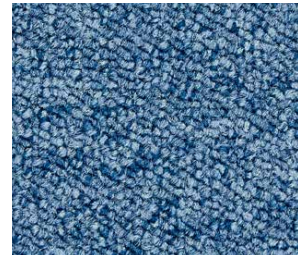
278 Charcoal



78 Raven



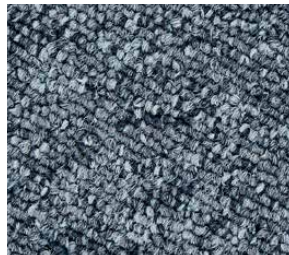
291 Peanut



282 Cerulean



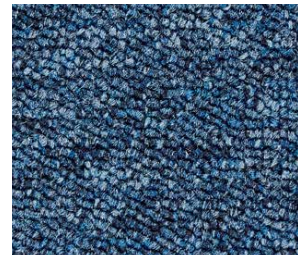
82 Ocean



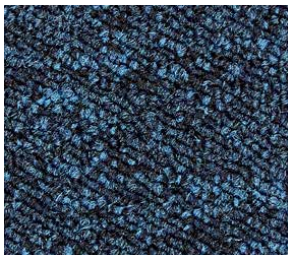
175 Pewter



182 Cobalt



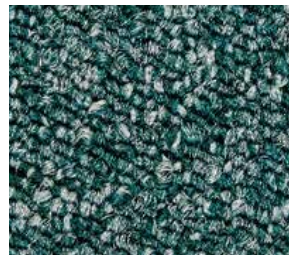
285 Peacock



83 Egyptian



141 Parakeet



41 Pine



20 Crimson

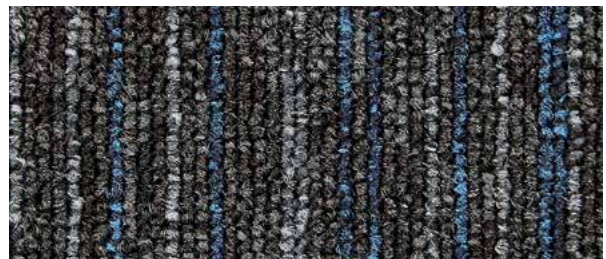


# Sprint - Stripe

## Carpet Tile



575 Planet



578 Storm



520 Flame



583 Admiral



# Sprint

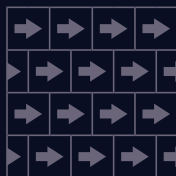
<b>Construction</b>	Tufted Loop Pile	
<b>Pile Content</b>	100% Solution Dyed Nylon	
<b>Primary Backing</b>	Woven	
<b>Secondary Backing</b>	Bitumen	
<b>Pile Weight</b>	550 g/m <sup>2</sup>	
<b>Total Weight</b>	4375 g/m <sup>2</sup>	
<b>Pile Height</b>	3.5mm	
<b>Total Thickness</b>	5.5mm	
<b>Gauge</b>	1/10"	
<b>Stitch Count</b>	181,240m <sup>2</sup>	
<b>Tile Size</b>	50x50cm	
<b>Wear Classification</b>	EN1307	33
<b>Luxury Classification</b>	EN1307	LC1
<b>Castor Chair</b>	Pass	
<b>Fastness to Light</b>	ISO 105-B02	≤5
<b>Antistatic</b>	ISO6356	≤2kV
<b>Fire Classification</b>	ISO 13501-1	Bfl-s1
<b>Sound Absorption</b>	ISO 354	αω 0.15
<b>Impact Noise Rating</b>	ISO 10140	25dB
<b>Thermal Conductivity</b>	ISO 8302	0.07m <sup>2</sup> K/W TOG 0.7



Monolithic



Quarter Turn  
Plain



Brick



Quarter Turn  
Stripe