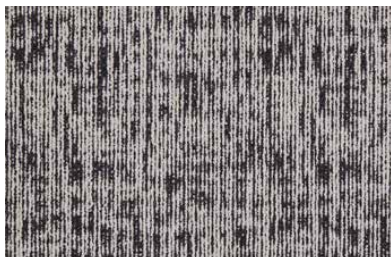


Outline

Carpet Tile



039 Fog



061 Vanilla



141 Taupe



204 Mustard



313 Ochre



340 Flame



569 Atlantic



695 Green



822 Hazelnut



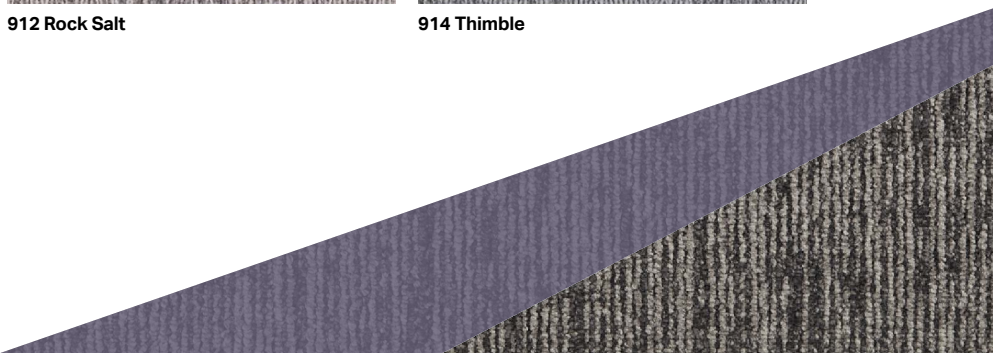
826 Conker



912 Rock Salt

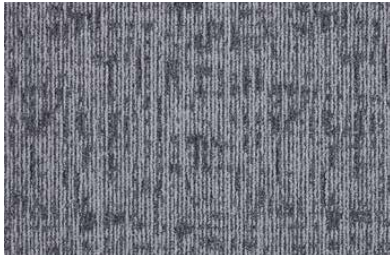


914 Thimble



Outline

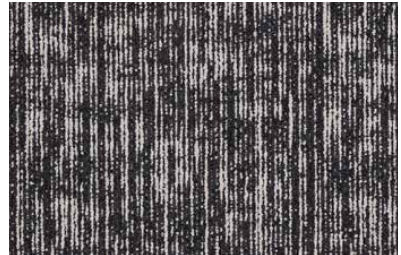
Carpet Tile



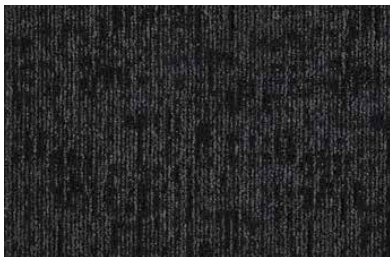
932 Porpoise



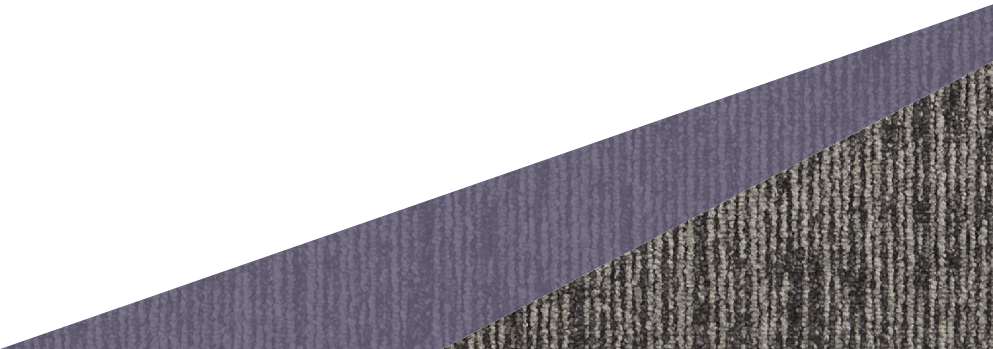
965 Storm



990 Night Walk



995 Graphite



Outline

Carpet Tile

Specification

Construction		Tufted 1/10" Loop
Pile Content		100% solution dyed nylon 6
Secondary Backing		back2back standard carpet tile backing with 70% post-industrial recycled content
Pile Height		4mm
Total Height		7.2mm
Total Weight		4500g/m ²
Size		50 x 50cm
Wear Classification	EN 1307	33
Luxury Classification	EN 1307	LC2
Stitch Count		186,000m ²
Fire Classification	ISO 13501-1	Bfl-s1

Suitability

Education

Healthcare

Hospitality & Leisure

Residential

Retail

Guarantee



15 Year Wear

Apply for full details of terms and conditions of above.

Maintenance

It is recommended that a maintenance schedule be introduced from the date of installation.

Regular cleaning is essential. All spillages and stains should be attended to immediately. Please refer to our website www.jhscarpets.co.uk which has full information on cleaning and maintenance.



JOSEPH HAMILTON SEATON
Relay Park, Relay Drive, Tamworth, Staffordshire. B77 5PR

Tel: 01827 831 400 | Email: sales@jhscarpets.com | www.jhscarpets.co.uk